



Algranel

Barranquilla terminal



TERMINAL FACTS

TOTAL TANK CAPACITY	3.585 m ³
NUMBER OF TANKS	4 tanks
TANKS SIZE	20,28 m ³ - 2.402,3 m ³
TANKS MATERIAL	Carbon
LOAD STATION	1 load station
DRAUGHT	11,8 mts
BERTHS	6
ACCESS TYPES	Ships, Tanker trucks, Isotanks, Motorboard, Barges, Flexibags, Trucks

PRODUCTS

Chemicals (controlled products), Vegetable Fats and Oils, Caustic Soda, Lubricating Bases and Petroleum-based fuels

SERVICES

Ship loading and unloading, truck loading and unloading, truck weighing, ship to tank transfer, truck to tank transfer, sloping arrangement, sloping storage, tank to tank transfer, product sampling, drummed, customs zone, free zone, storage liquids in bulk, product preservation

CONTACT INFORMATION

ADDRESS

Carrera 38 Calle 1ª Orilla del Río. Terminal Marítimo . Dentro de la Sociedad Portuaria Regional de Barranquilla.

HELÍ BARRERA

Comercial manager

 +57 316-3373330

 hbarrera@algranel.com.co

JOSELIN CALIXTO

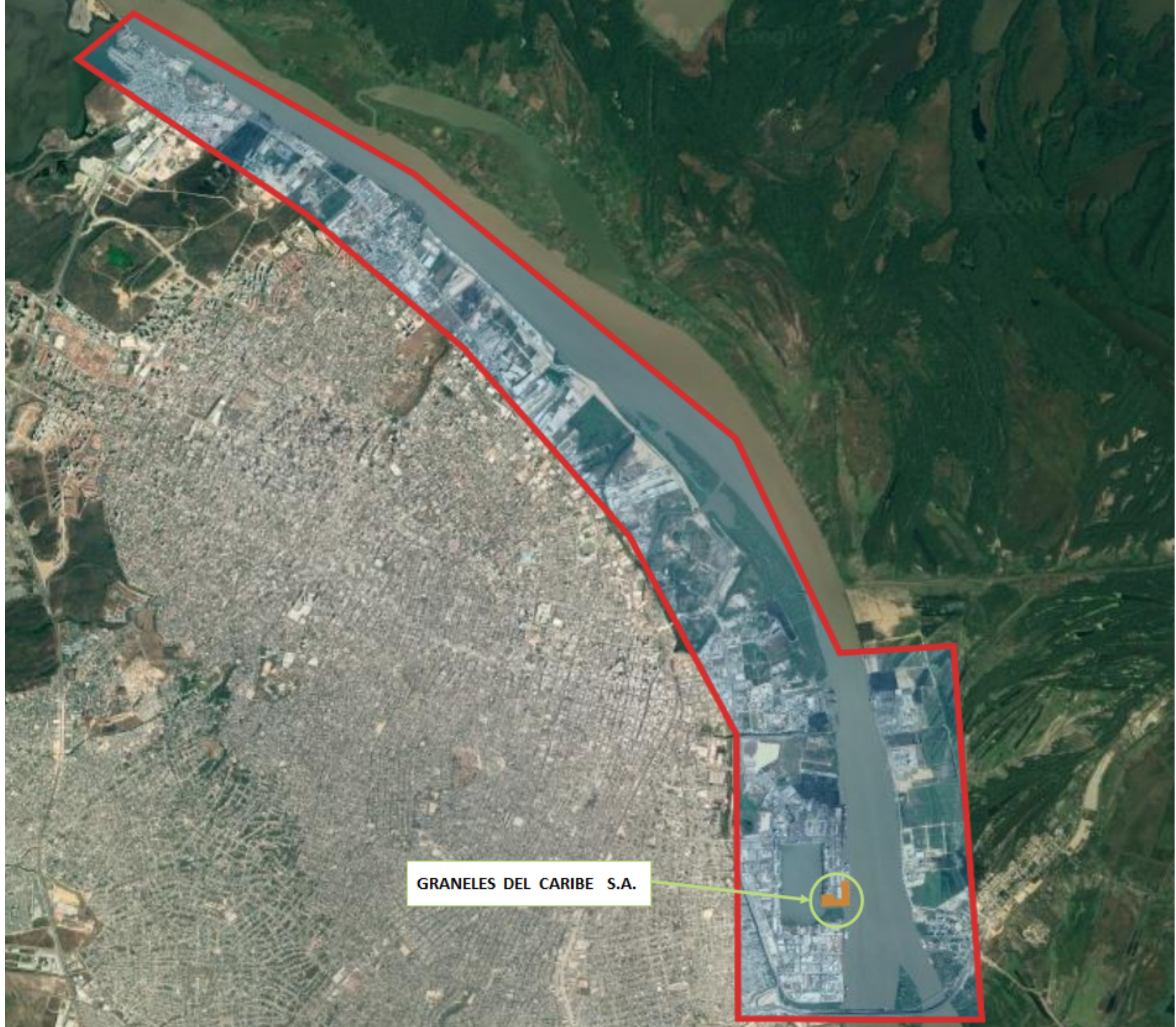
Terminal Manager

 +57 300-2305650

 joselin.calixto@algranel.com.co



Algranel



GRANELES DEL CARIBE S.A.